

Grade 6 Trumpet Scales

D Major - 12th

Two staves of musical notation for the D Major scale, 12th position. The first staff shows the ascending scale, and the second staff shows the descending scale. The key signature has two sharps (F# and C#).

C Minor - 12th
HARMONIC

One staff of musical notation for the C Minor scale, 12th position, Harmonic. The key signature has three flats (Bb, Eb, and Ab).

MELODIC

One staff of musical notation for the C Minor scale, 12th position, Melodic. The key signature has three flats (Bb, Eb, and Ab).

One staff of musical notation for the C Minor scale, 12th position. The key signature has three flats (Bb, Eb, and Ab).

F Sharp Major - 2 Octaves

One staff of musical notation for the F Sharp Major scale, 2 Octaves. The key signature has six sharps (F#, C#, G#, D#, A#, and E#).

One staff of musical notation for the F Sharp Major scale, 2 Octaves. The key signature has six sharps (F#, C#, G#, D#, A#, and E#).

A Major - 2 Octaves

One staff of musical notation for the A Major scale, 2 Octaves. The key signature has three sharps (F#, C#, and G#).

One staff of musical notation for the A Major scale, 2 Octaves. The key signature has three sharps (F#, C#, and G#).

Bb Major- 2 Octaves

Two staves of musical notation for the Bb Major scale, 2 octaves, HARMONIC. The first staff shows the ascending and descending melodic lines. The second staff shows the harmonic accompaniment, consisting of a series of chords.

Bb Minor- 2 Octaves
HARMONIC

Three staves of musical notation for the Bb Minor scale, 2 octaves, HARMONIC and MELODIC. The first staff shows the ascending and descending melodic lines. The second staff shows the harmonic accompaniment, consisting of a series of chords. The third staff shows the harmonic accompaniment, consisting of a series of chords.

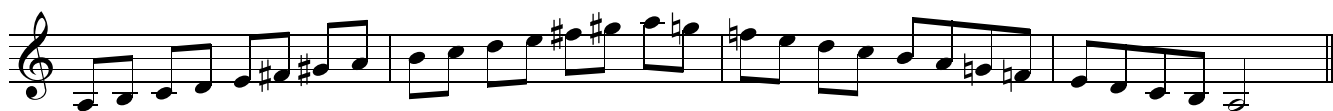
G Sharp Minor- 2 Octaves
HARMONIC

Three staves of musical notation for the G Sharp Minor scale, 2 octaves, HARMONIC and MELODIC. The first staff shows the ascending and descending melodic lines. The second staff shows the harmonic accompaniment, consisting of a series of chords. The third staff shows the harmonic accompaniment, consisting of a series of chords.

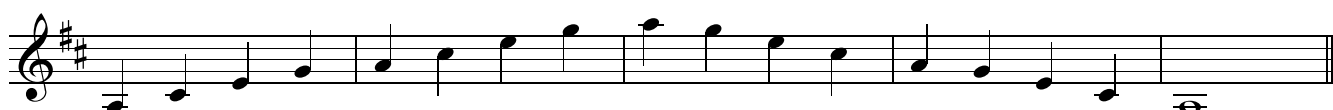
A Minor- 2 Octaves
HARMONIC



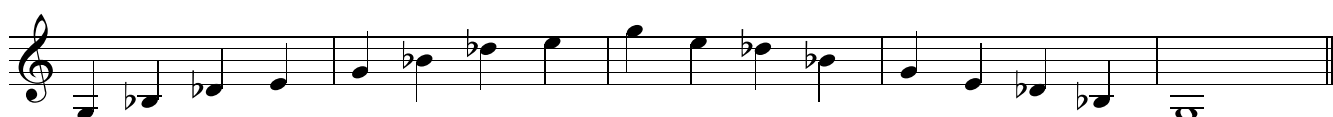
MELODIC



Dominant 7th in the key of D



Diminished 7th on G



Chromatic Scales:

Starting on F Sharp, G, Ab and A - 2 Octaves